

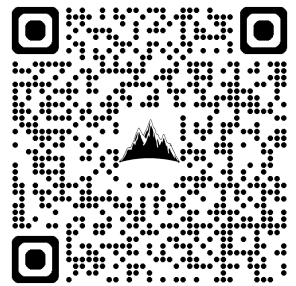
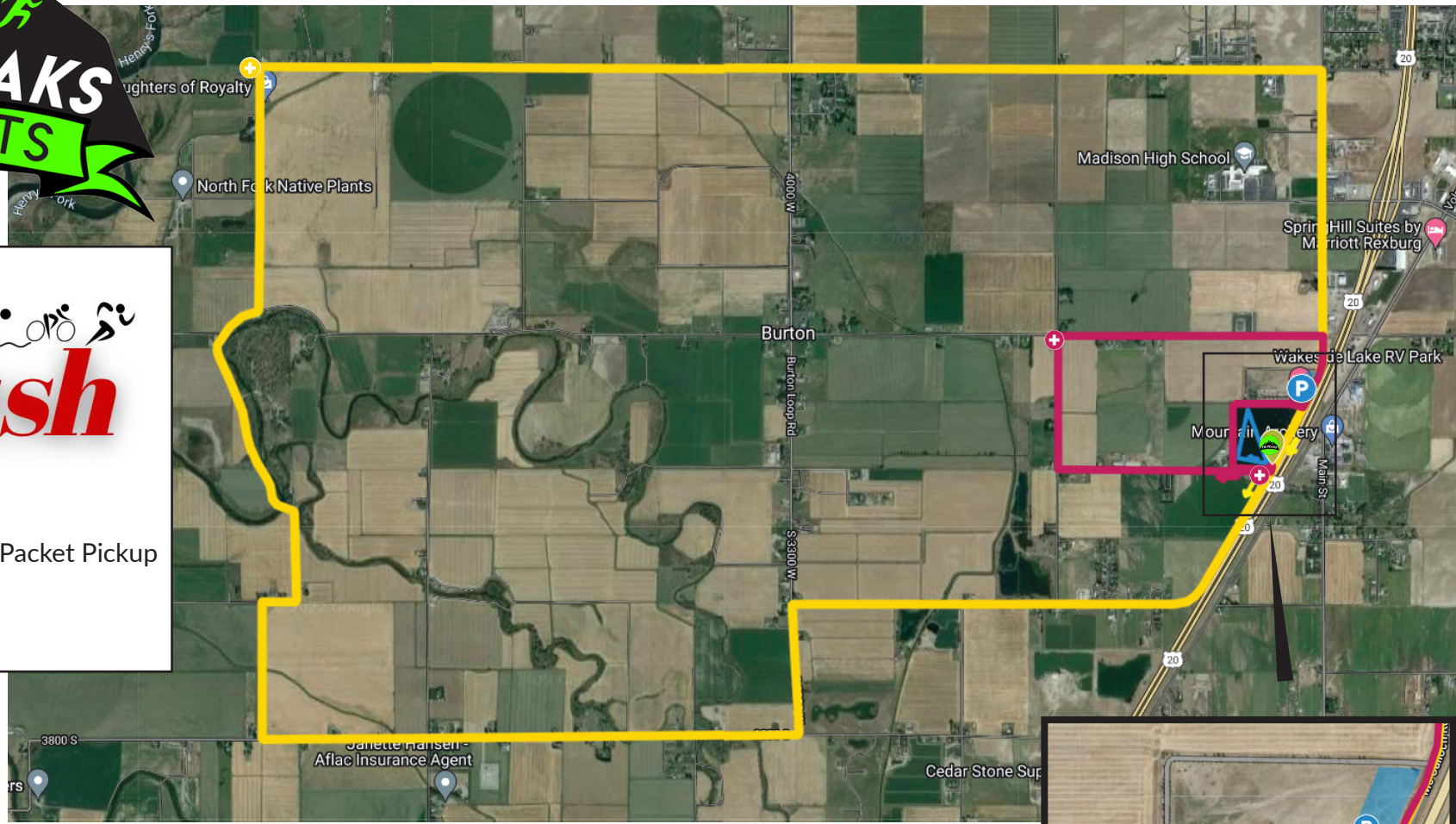


**Rexburg** 

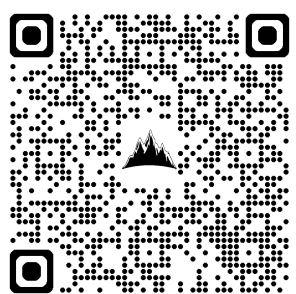
# Rush

Triathlon

-  Transition Area / Packet Pickup
-  Aid Station






OLYMPIC






SPRINT

## OLYMPIC

-  Swim - 0.93 miles
-  Bike - 25.8 miles
-  Run - 6.15 miles

# 2 LAPS

## SPRINT

-  Swim - 0.51 miles
-  Bike - 12.9 miles
-  Run - 3.21 miles

# 1 LAP

